

Guide to Installing your Custom HoloKote for Magiscard Helix printer

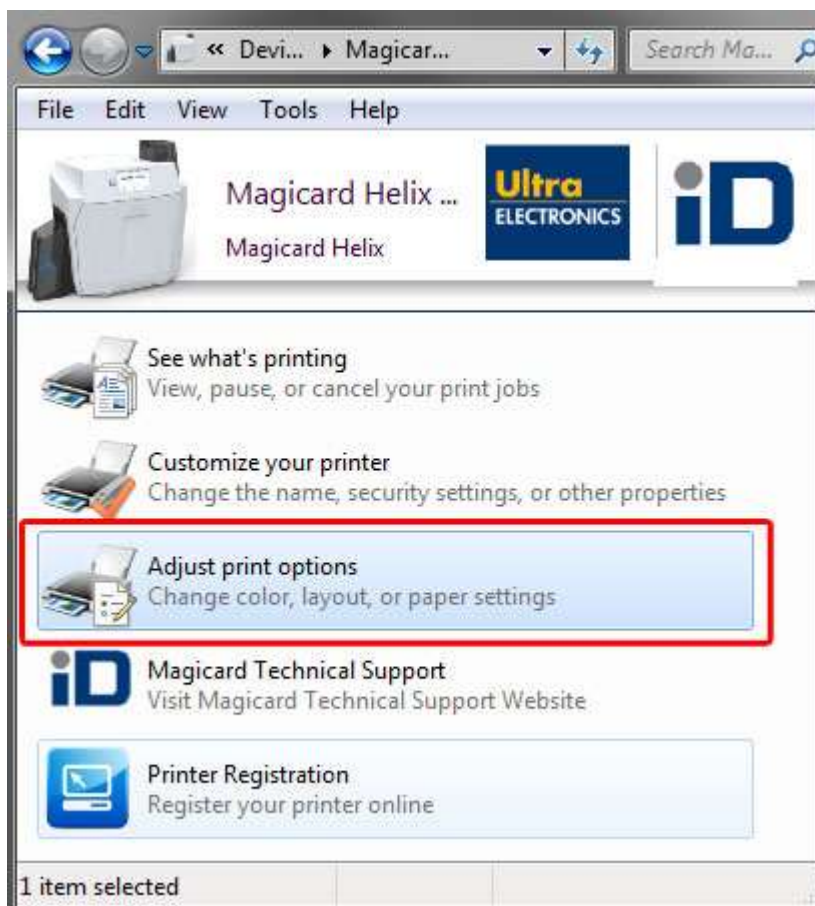
Installing a Custom HoloKote to your Helix printer can be done in two ways, both through your printer driver.

If the printer is connected to an Internet-enabled PC: By downloading the HoloKote securely from our webserver.

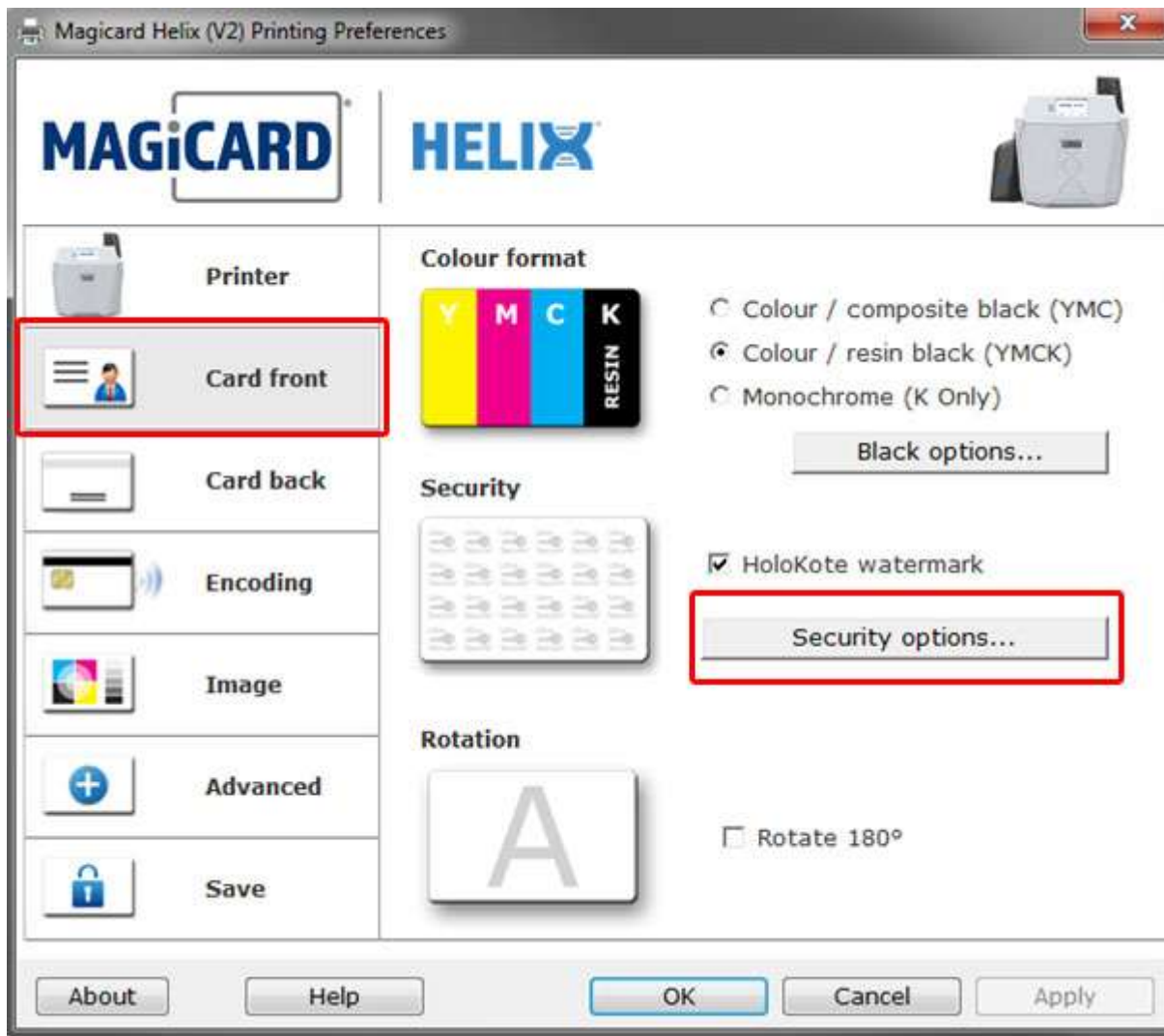
If the printer cannot be connected to an Internet-enabled PC: By downloading the HoloKote file from your support account and installing it offline from a connected PC.

Online Installation

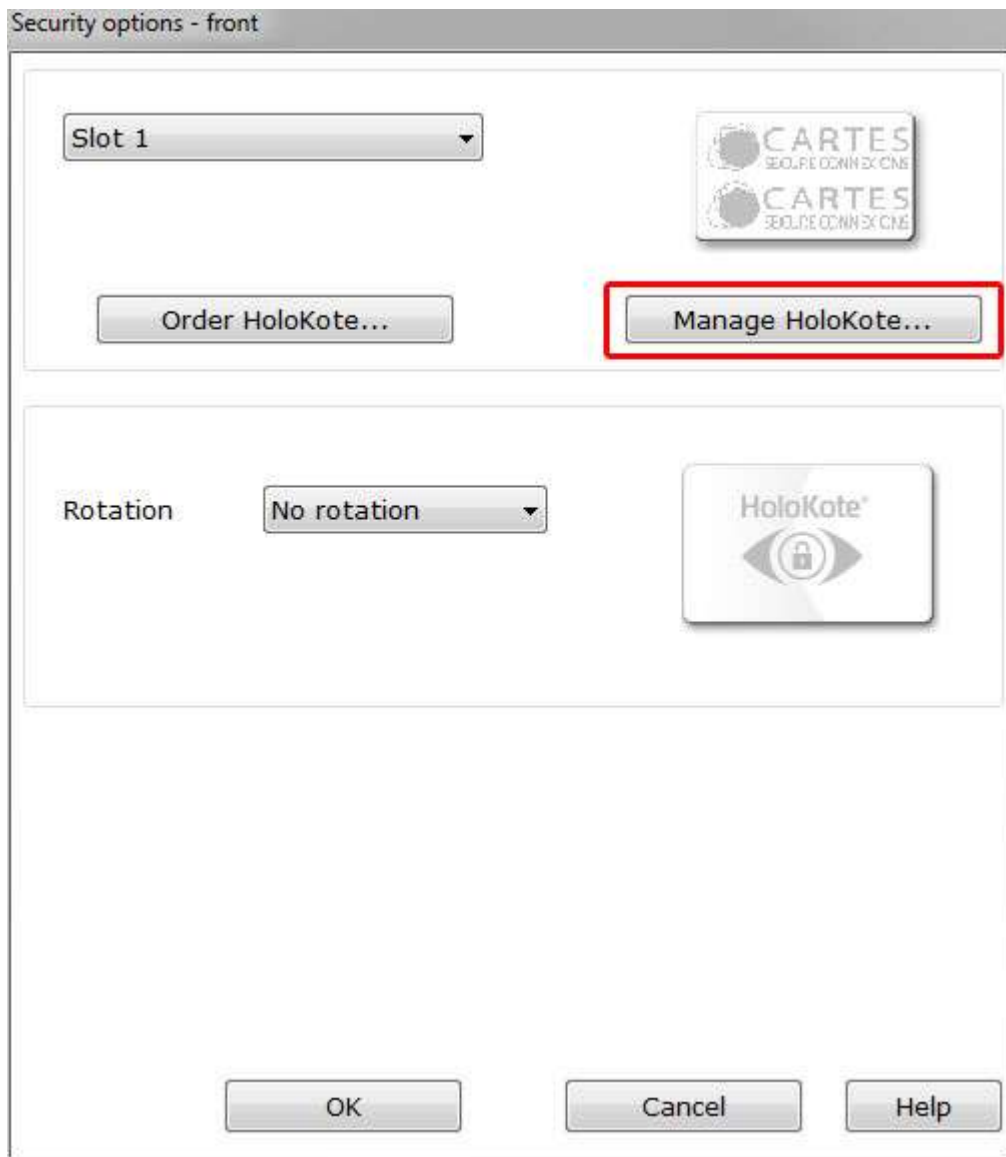
Open the Magiscard Helix driver in the <**Devices and printers**> area of your Windows OS and then open <**Adjust printer options**>



Navigate to the <Card front> tab and click the <Security options> button, this option will be disabled if you do not have HX750YMCKS ([link to cons](#)) HoloKote dye film loaded in your printer.

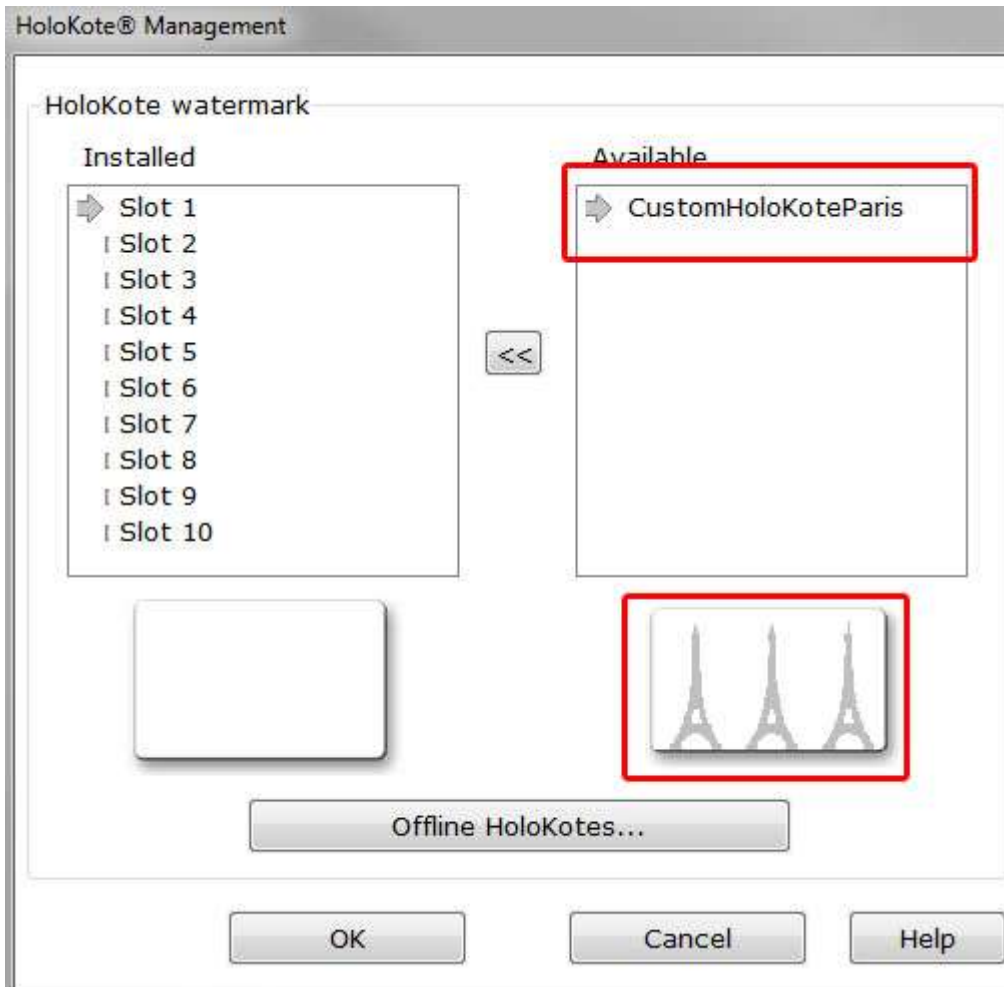


The <**Security options**> tab gives you an overview of your current HoloKote settings. To retrieve your new Custom HoloKote click <**Manage HoloKotes**>. This will bring up a dialogue showing the printer driver connecting to the secure HoloKote servers and retrieving your design from your account.

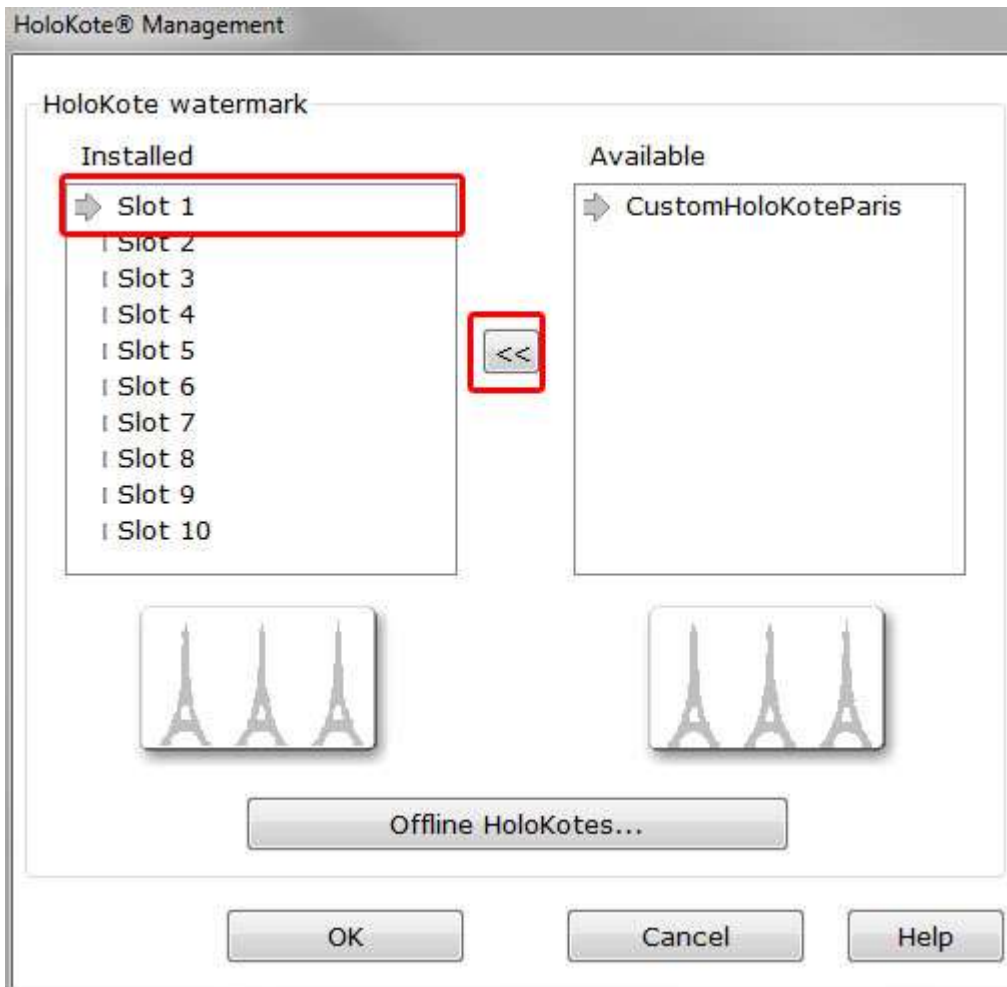


8

Once complete, this interface will show your currently <Installed> HoloKotes and <Available> custom designs from your support account.



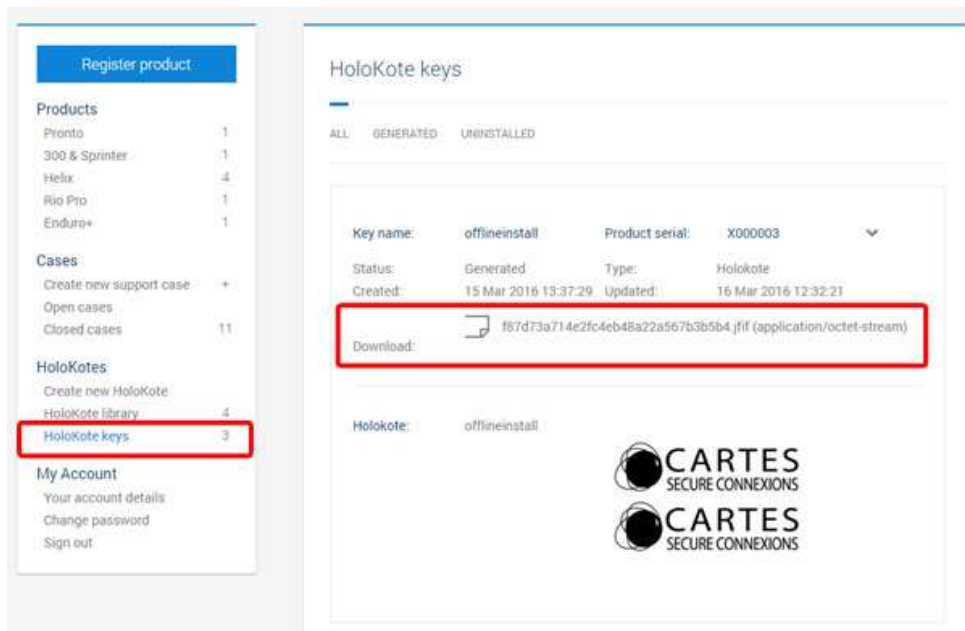
To install the HoloKote to your printer select your design in the **<Available>** panel. Highlight one memory slot from the 10 preinstalled designs. When ready click the transfer arrow between the two panels, this will overwrite the selected preinstalled design with your Custom HoloKote.



Offline installation

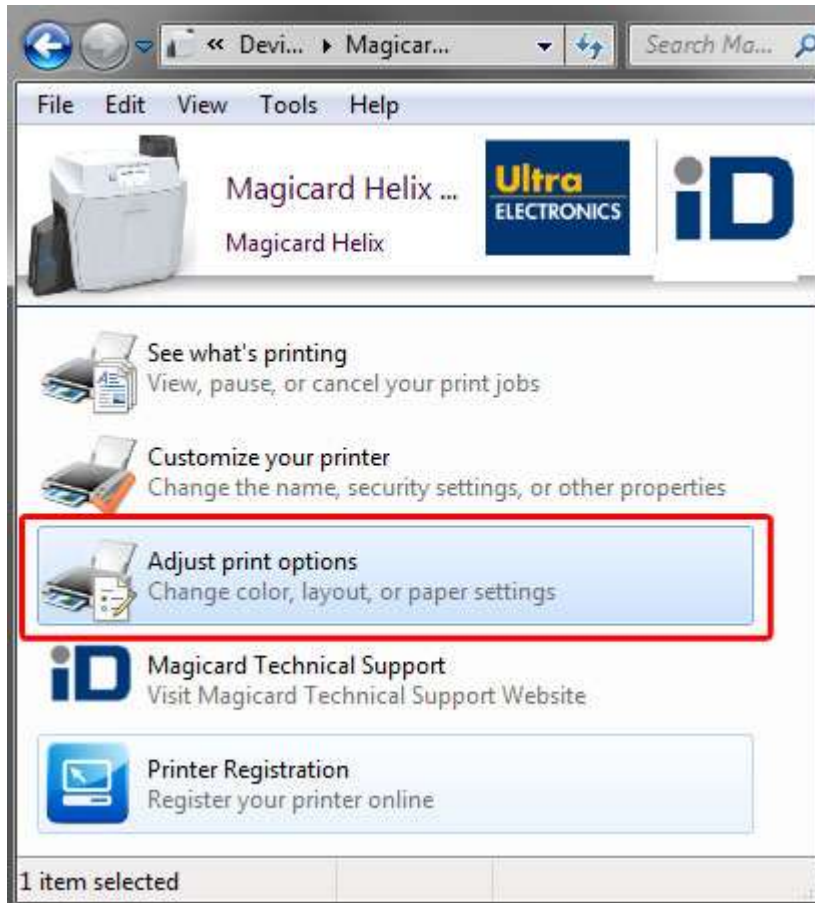
If your printer cannot be connected to an Internet-enabled computer it is possible to perform an offline installation.

To do this you will need to download your Custom HoloKote file from your online support account and transfer it to a computer connected to your Helix printer via USB or Ethernet.

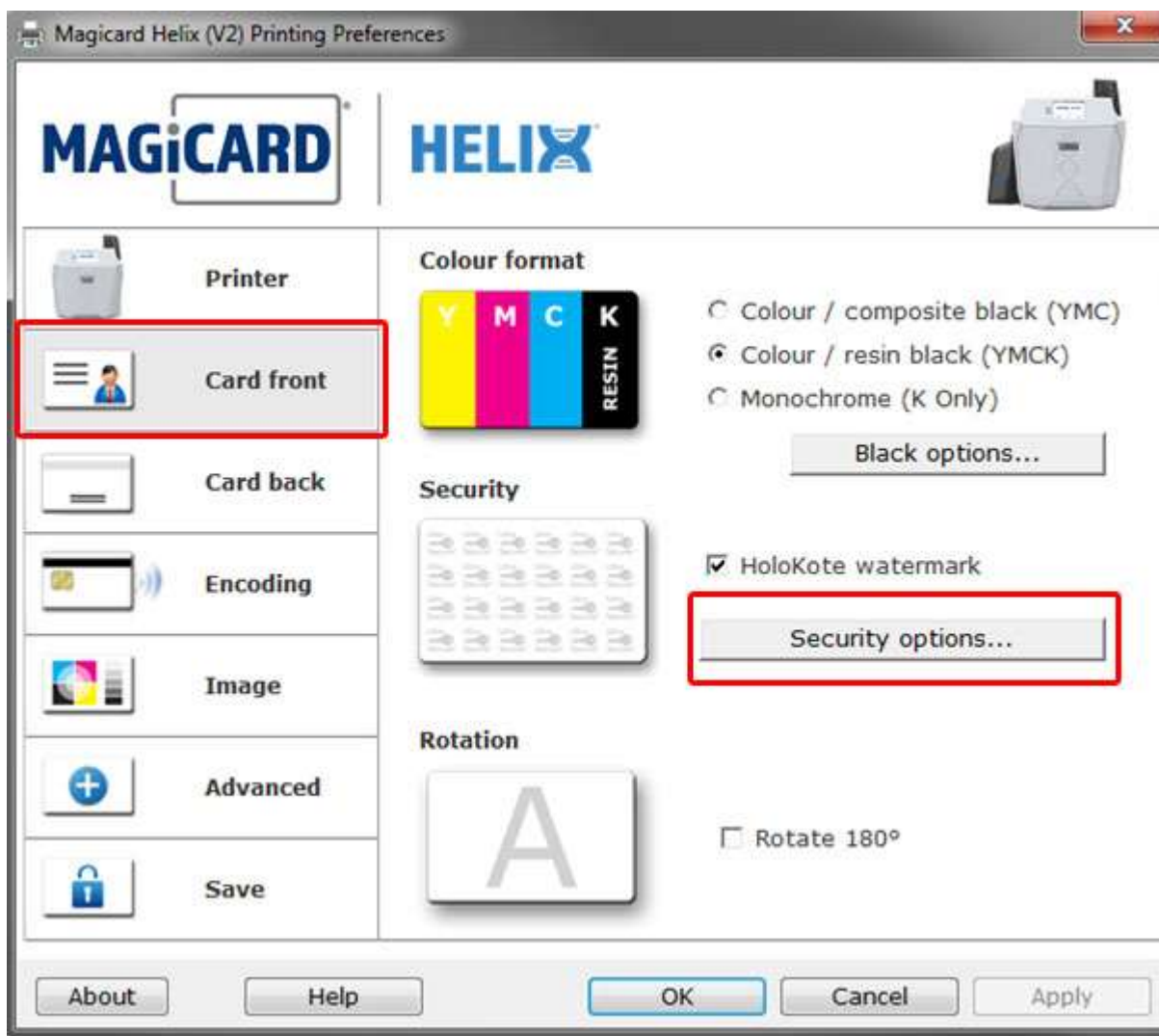


Save this file to a known location such as the <Desktop> or <My documents> area of the computer connect to the Helix printer.

Open the Magicard Helix driver in the <**Devices and printers**> area of your Windows OS and then open <**Adjust printer options**>



Navigate to the <**Card front**> tab and click the <**Security options**> button, this option will be disabled if you do not have HX750YMCKS ([link to cons](#)) HoloKote dye film loaded in your printer.



The <**Security options**> tab gives you an overview of your current HoloKote settings. To retrieve your new Custom HoloKote click <**Manage HoloKotes**>.

Security options - front

Slot 1

CARTES
SECURE CONNECTIONS

Order HoloKote...

Manage HoloKote...

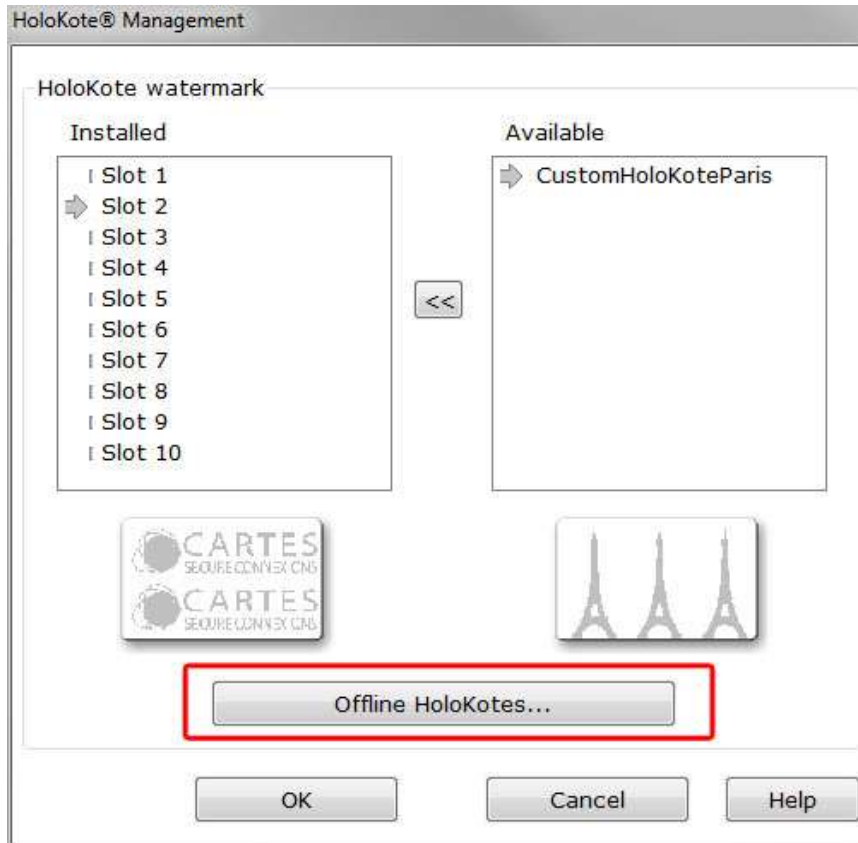
Rotation No rotation

HoloKote®

OK Cancel Help

8

Click on **<Offline HoloKote>**. Navigate to the file location of your saved Custom HoloKote file (.Jfif). Your Custom HoloKote design will now appear in the **<Available>** window.



To install the HoloKote to your printer select your design in the **<Available>** panel. Highlight one memory slot from the 10 preinstalled designs. When ready click the transfer arrow between the two panels, this will overwrite the selected preinstalled design with your Custom HoloKote.

