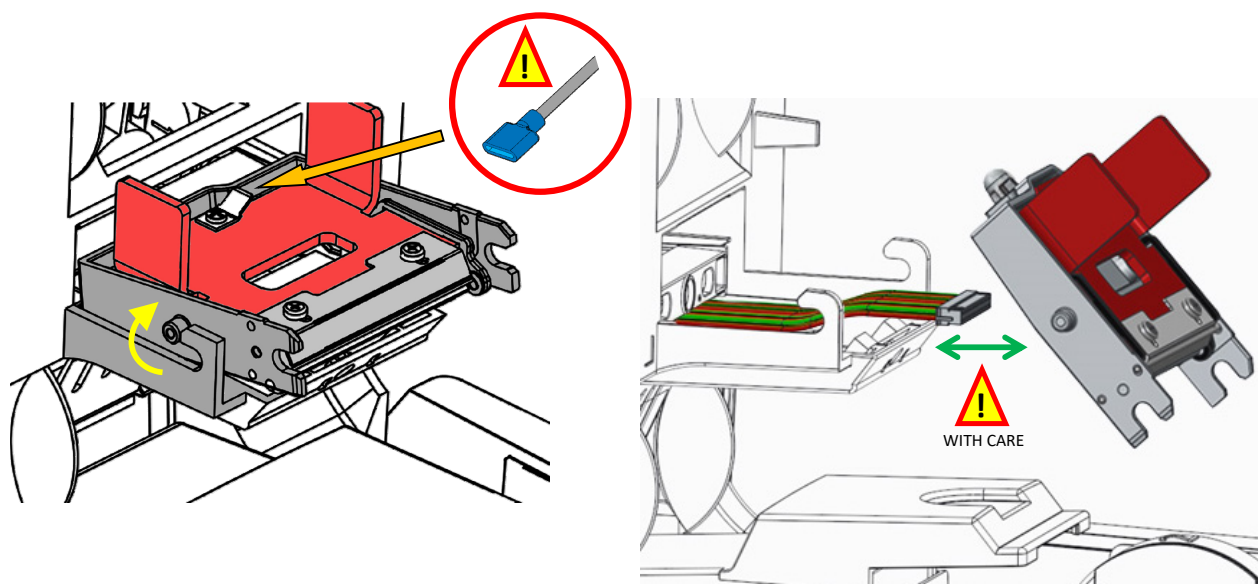
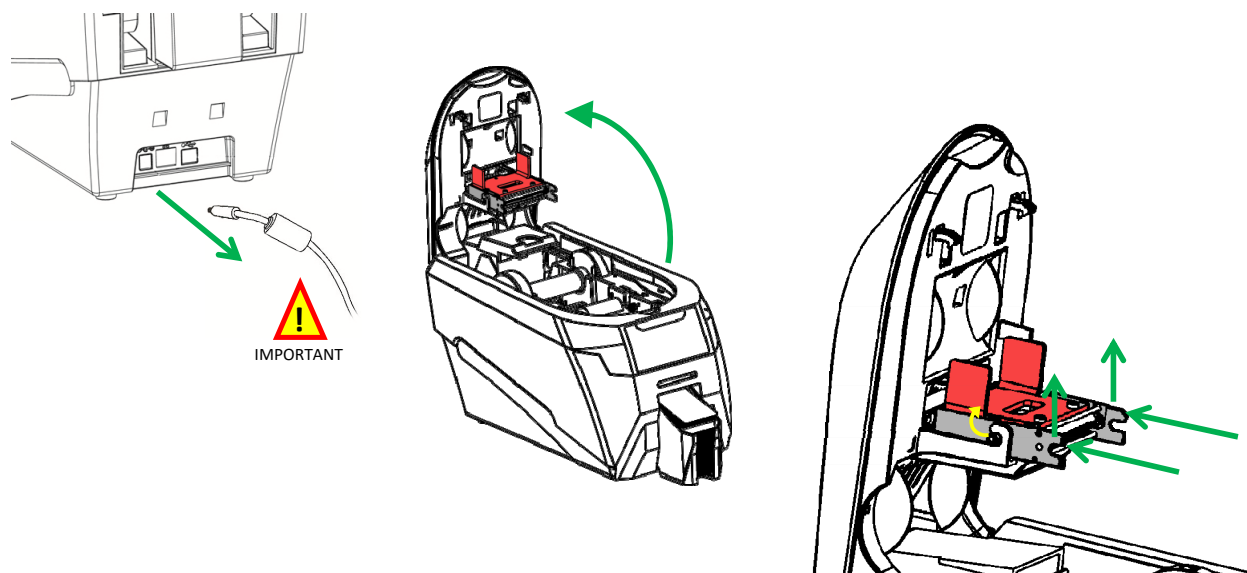




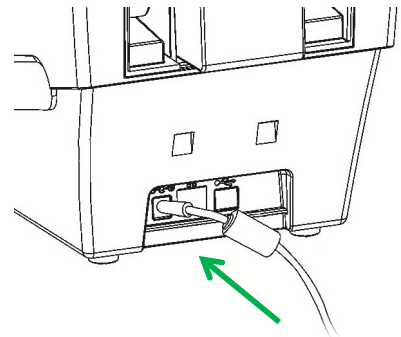
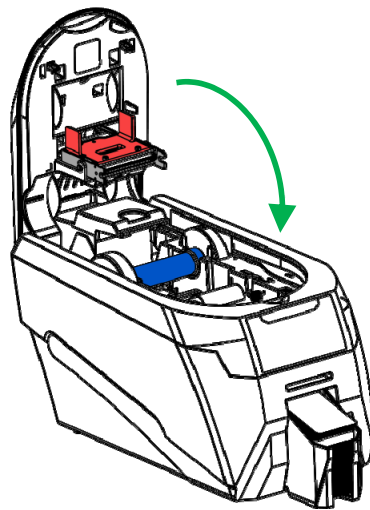
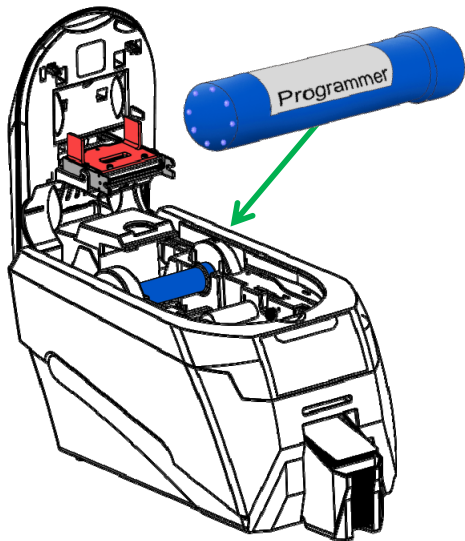
How-to video

How to fit a replacement Print Head

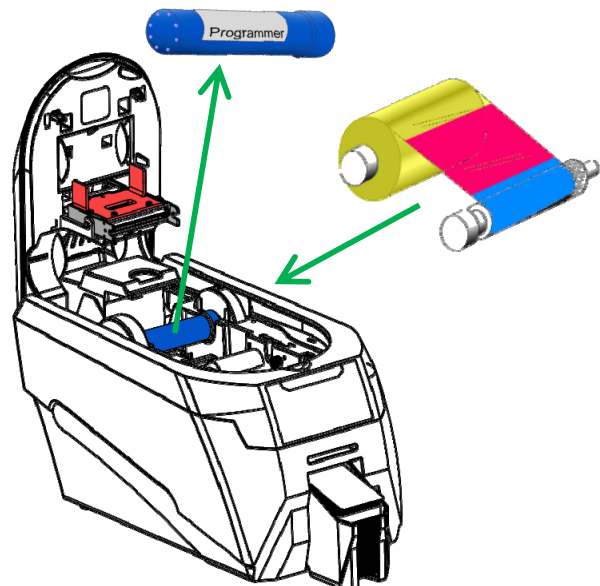
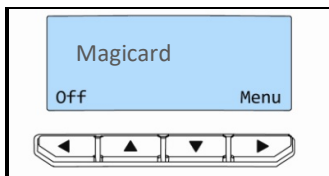
Images are for Rio Pro, but the process is the same for Enduro, Enduro+, Enduro 3e and Pronto



Now fit the Replacement Printhead in reverse order, when fitted please continue overleaf.



READY



For any further support or questions please contact Magicard Technical Support

+44 (0) 1305 470000
Option 2



support@magicard.com